

# Admitted Student Checklist

**LIFE**<sup>®</sup>  
University

Orientation  
DIVISION OF STUDENT AFFAIRS

## HAVE YOU:



Reviewed the costs to attend and payment deadlines:  
[LIFE.edu/Tuition-Info](http://LIFE.edu/Tuition-Info)

Paid your \$125 Enrollment Fee and submitted pending Enrollment Documents per acceptance letter (if needed). Connect with your Admissions Counselor:  
[LIFE.edu/admissions-pages/admissions-information/find-your-team-2/](http://LIFE.edu/admissions-pages/admissions-information/find-your-team-2/)



Completed Housing Application, paid Housing Application fee and paid Housing Que Deposit  
[LIFE.edu/Housing](http://LIFE.edu/Housing)



Set up your Engage Profile  
[Engage.LIFE.edu](http://Engage.LIFE.edu)

Sent in your official and final official transcripts and or test scores

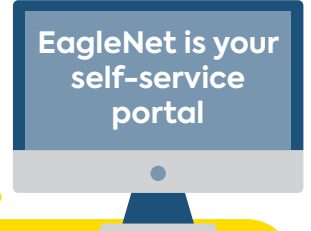


Asked your Academic Advisor or Financial Aid Counselor questions



Logged into EagleNet:  
[eaglenet.life.edu](http://eaglenet.life.edu)

EagleNet is your self-service portal



✓ Updated your contact information & emergency contacts

### FINANCIAL AID:

- ✓ Completed your FA checklist
- ✓ Connected with your FA Counselor

### STUDENT ACCOUNTS:

- ✓ Entered your banking information
- ✓ Enrolled in LU payment plan
- ✓ Completed the Student Acknowledgment Form
- ✓ Consented to receiving your 1098T electronically

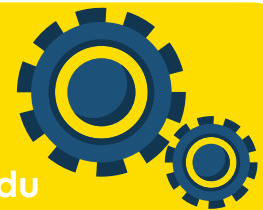
### STUDENT PLANNING:

- ✓ Scheduled your advising appointment
- ✓ Created your Academic Plan
- ✓ Registered for your classes

Registered for New Student Orientation on campus  
[LIFE.edu/campus-life-pages/orientation/](http://LIFE.edu/campus-life-pages/orientation/)



Completed your BlackBoard Orientation course  
[blackboard.LIFE.edu](http://blackboard.LIFE.edu)



Turned in your Veterans Affairs certification letter \*if needed\*



**Questions/Concerns: Contact us at 770-426-2700**